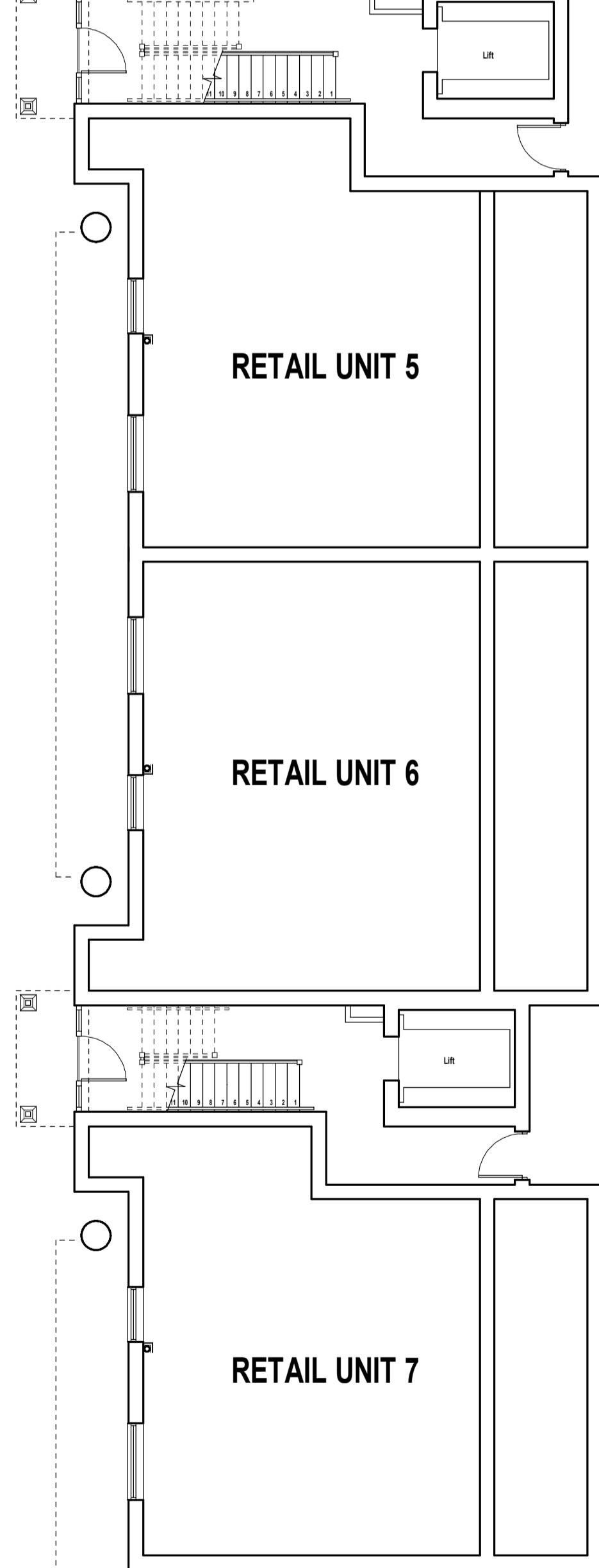


**PROPOSED COMMUNITY CENTRE
(NEW NORTH TOWN BASE)**

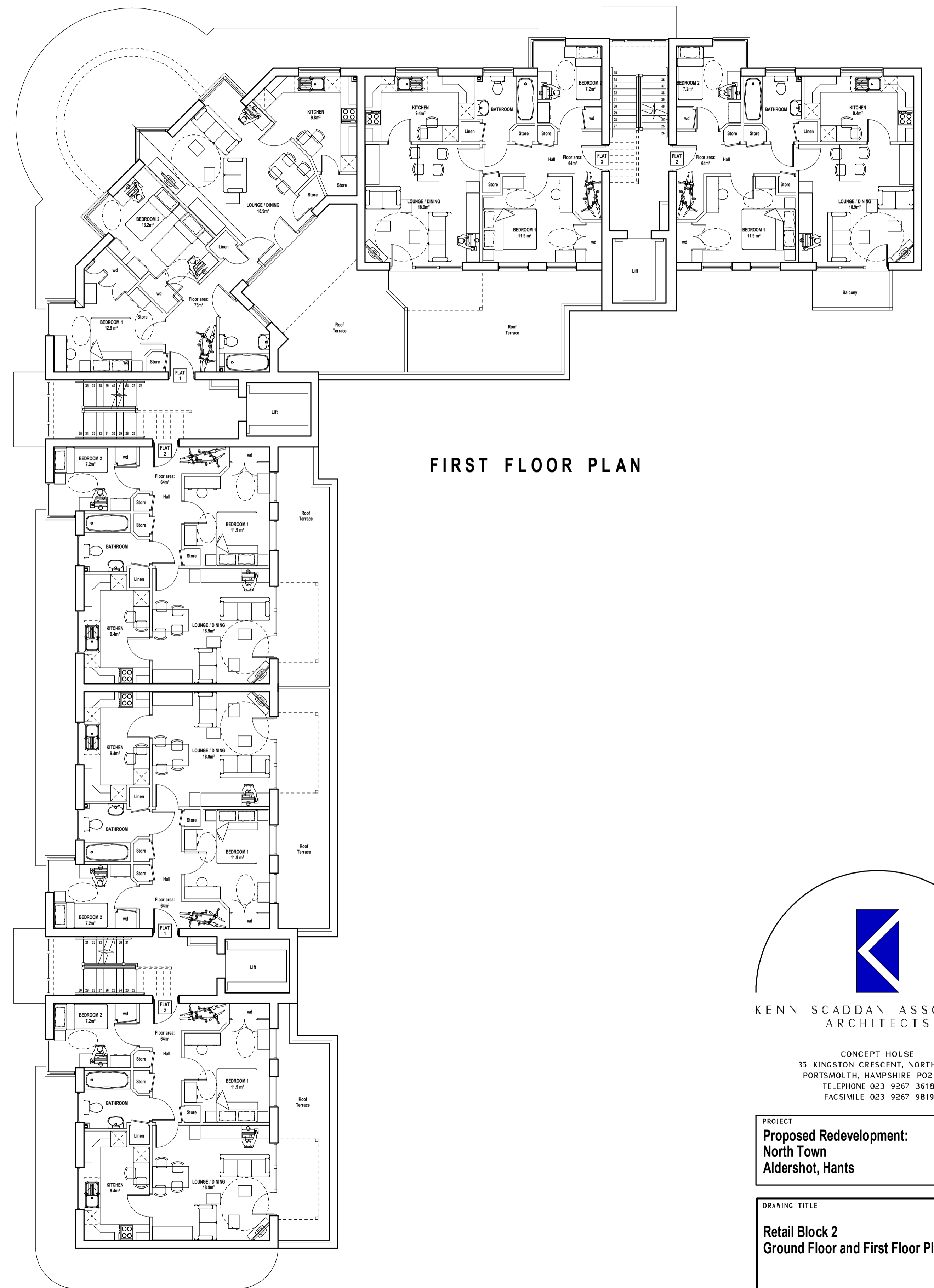
GROUND FLOOR PLAN



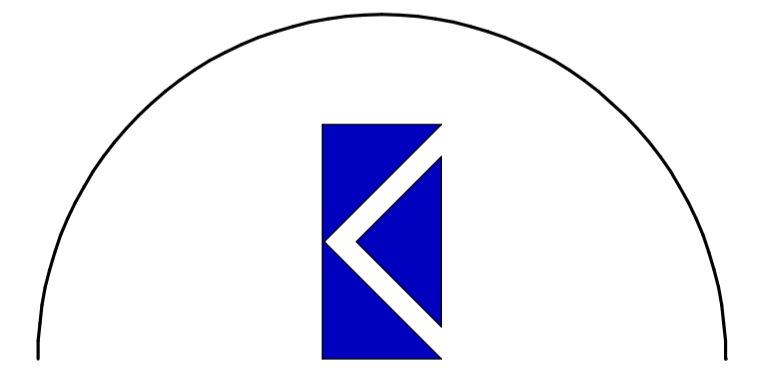
RETAIL UNIT 5

RETAIL UNIT 6

RETAIL UNIT 7



FIRST FLOOR PLAN



**KENN SCADDAN ASSOCIATES
ARCHITECTS**

CONCEPT HOUSE
35 KINGSTON CRESCENT, NORTH END
PORTSMOUTH, HAMPSHIRE PO2 8AA
TELEPHONE 023 9267 3618
FACSIMILE 023 9267 9819

PROJECT
**Proposed Redevelopment:
North Town
Aldershot, Hants**

DRAWING TITLE
**Retail Block 2
Ground Floor and First Floor Plans**

Date: July 2009 Drawn by: P/JLD

Scale: 1:100 Drawing No. 940-PD-204 REV.