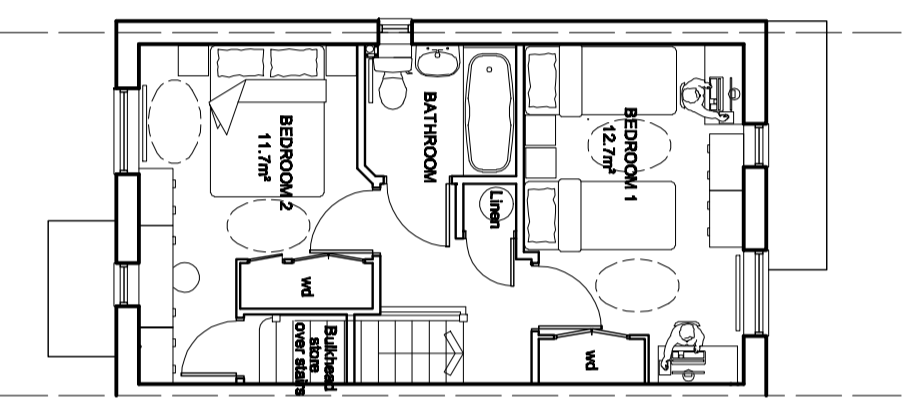
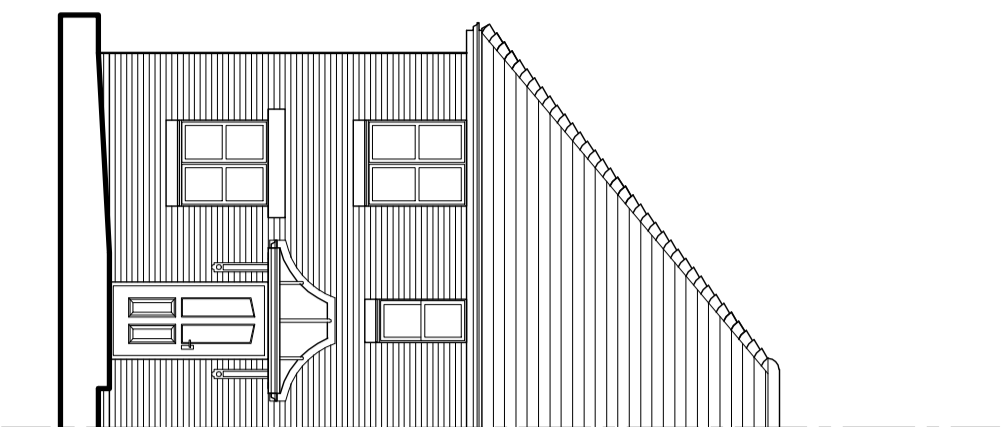


GROUND FLOOR PLAN

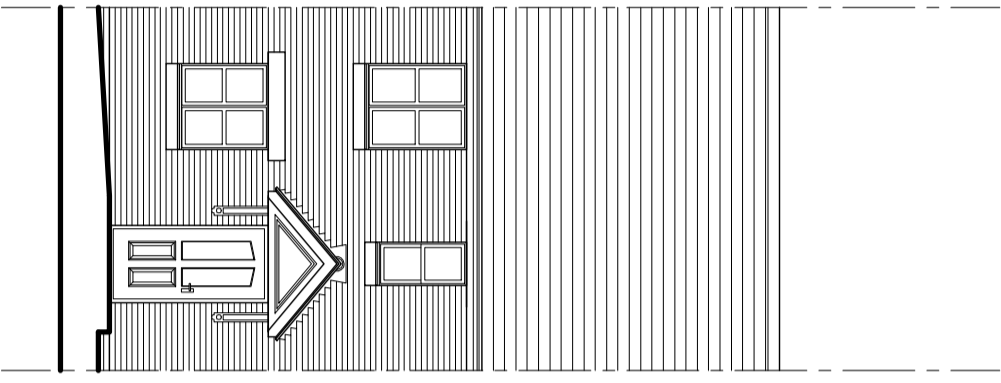


FIRST FLOOR PLAN

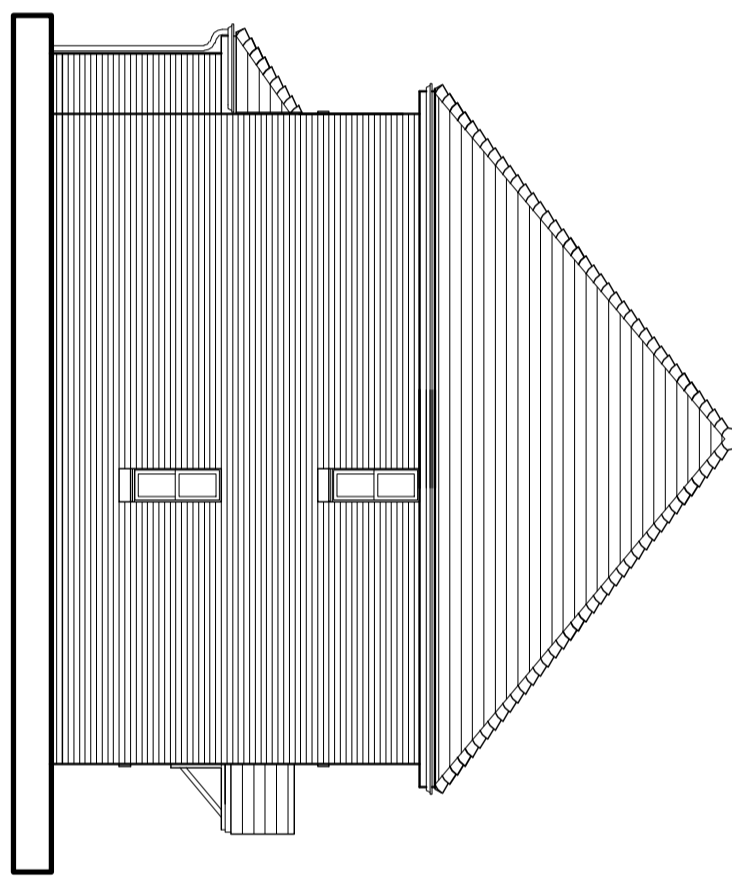
2 BEDROOM 4 PERSON TERRACED HOUSES
74m²



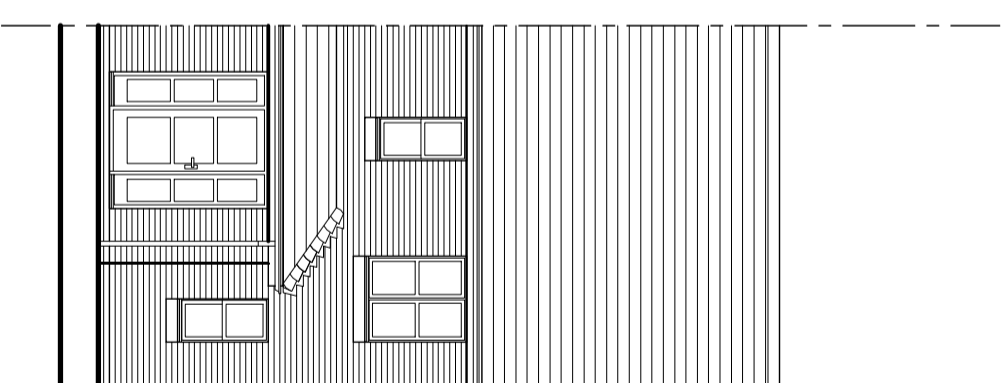
2BH - END
TERRACE - FRONT
ELEVATION



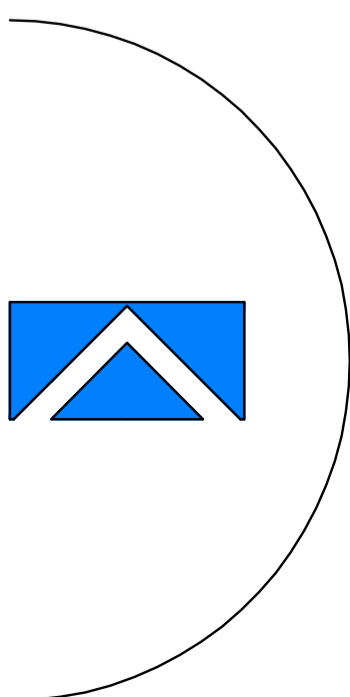
2BH - MID
TERRACE -
FRONT
ELEVATION



2BH - END
TERRACE -
SIDE
ELEVATION



2BH - mid
terrace - REAR
elevation



KENN SCADDAN ASSOCIATES LTD
ARCHITECTS

CONCEPT HOUSE
36 KINGSTON CRESCENT, NORTH END
PORTSMOUTH, HAMPSHIRE PO2 8AA
TELEPHONE: 023 9287 3918
FACSIMILE: 023 9287 9519
E-MAIL: info@kennscaddan.co.uk

PROJECT
Proposed Development:
North Town
Aldershot, Hants

DRAWING TITLE
TYPICAL 2 BED HOUSE
PLANS & ELEVATIONS

Date: July 2009
Scale: @ A2
1:100
Drawn by: RJK
Drawing No: 940-PD211
Rev: -