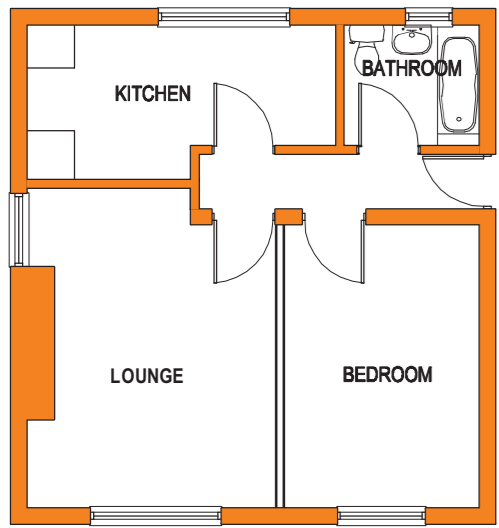


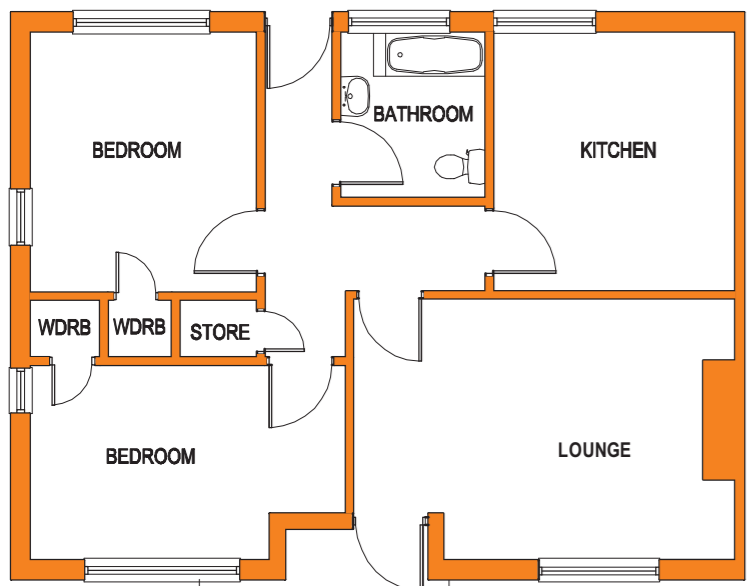
Home Sizes

Many people wanted to know how their old homes would compare with the new ones that we are proposing to build.

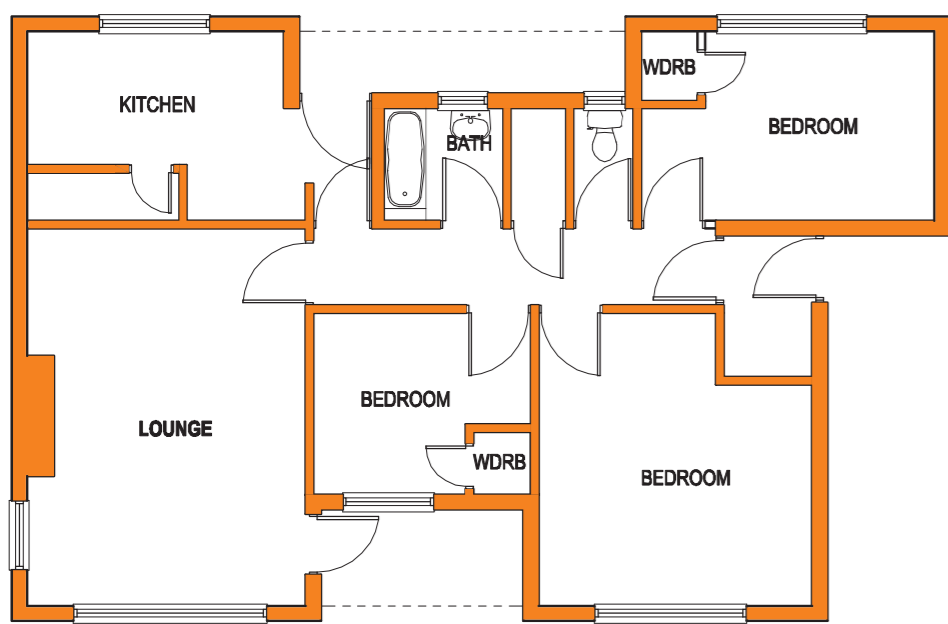
OLD



1 bed flat
approx 37m²

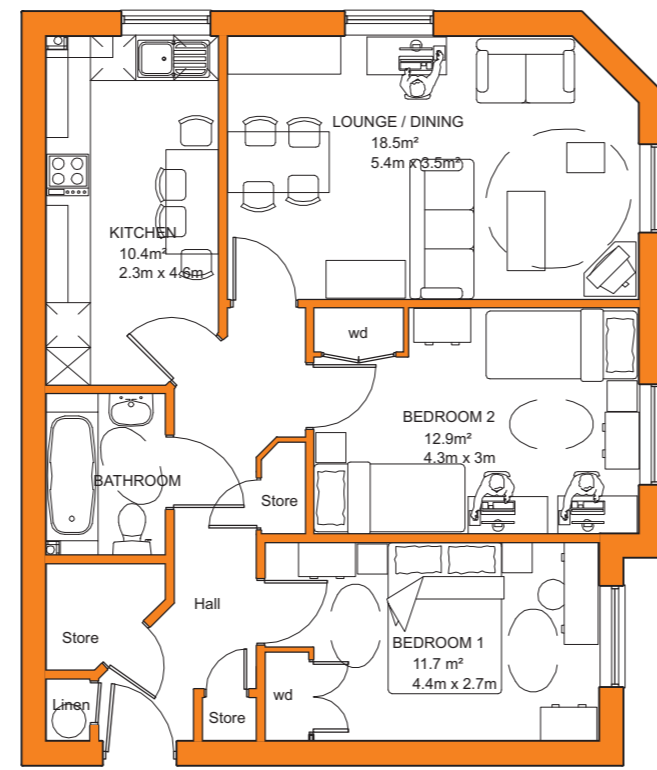


2 bed flat
approx 63m²

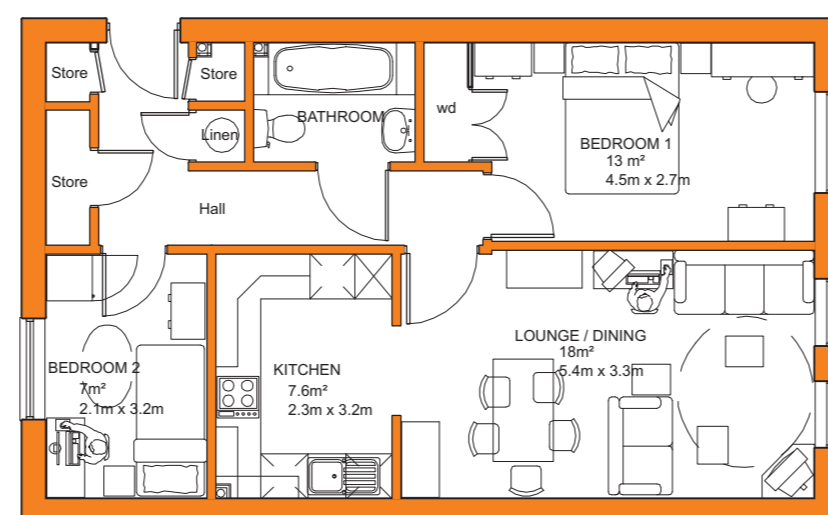


3 bed flat
approx 73m²

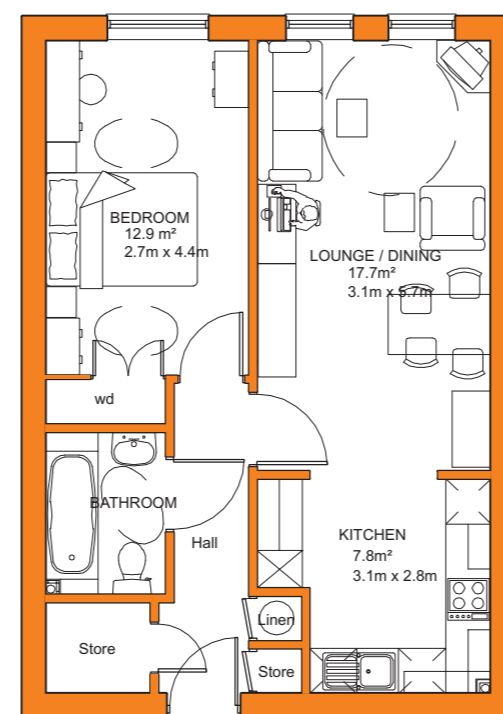
NEW



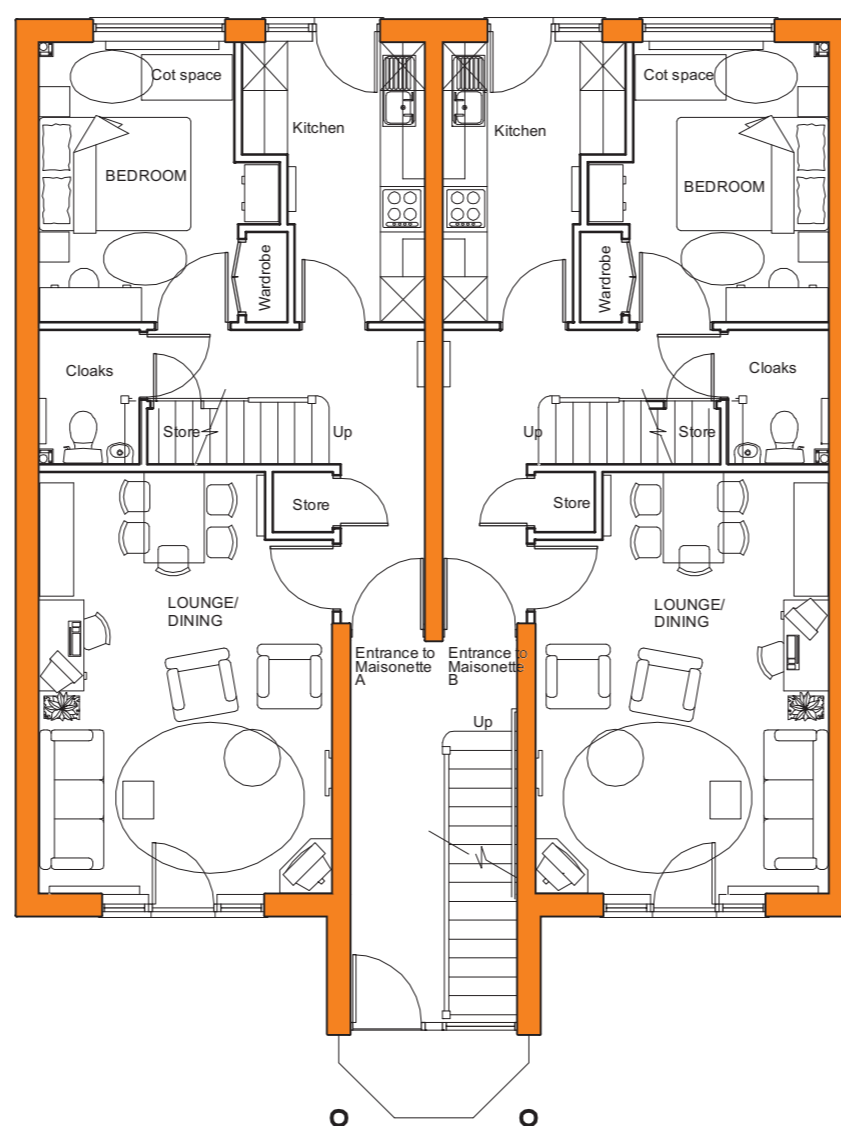
2 bed 4 person flat 71m²



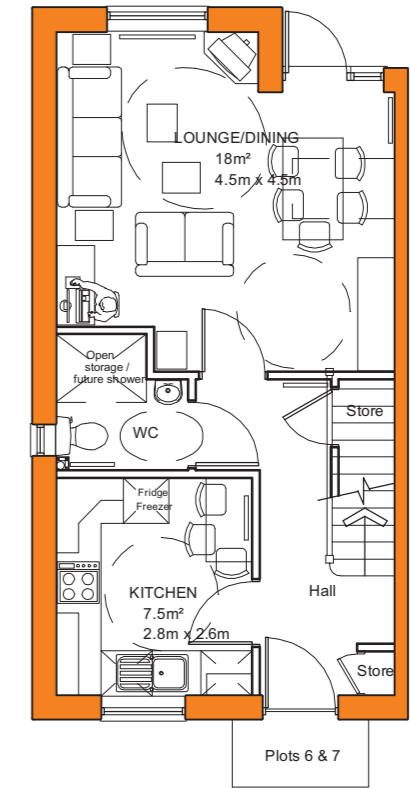
2 bed 3 person flat 61.5m²



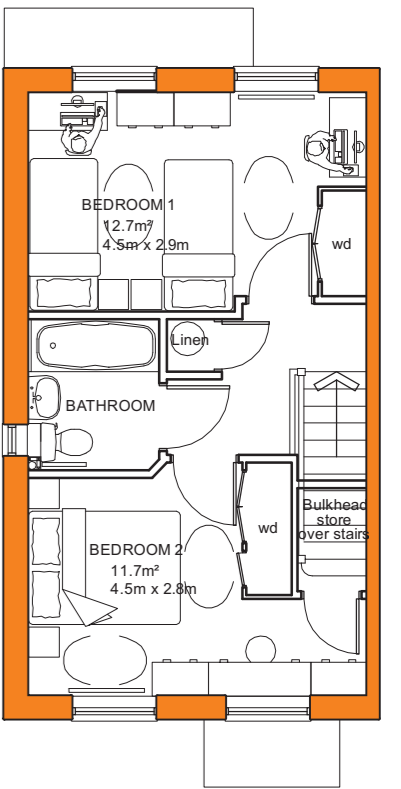
1 bed 2 person flat 51m²



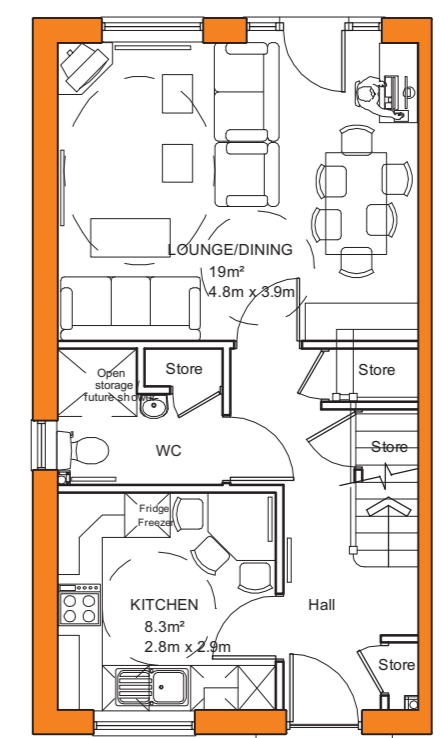
Ground floor
2 bed 4 person Maisonettes @ 81m²



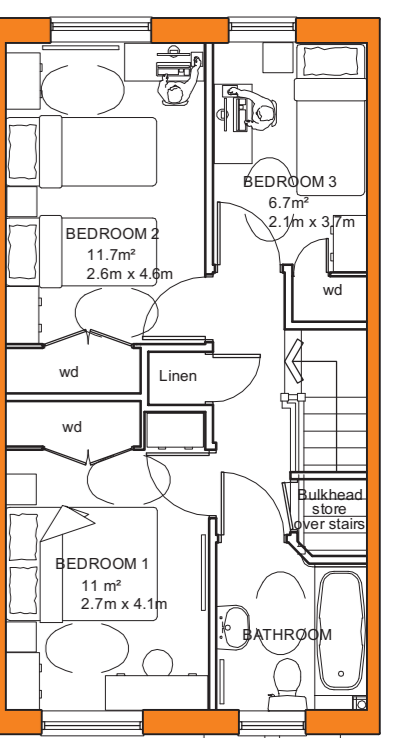
GROUND FLOOR PLAN
2 BEDROOM 4 PERSON HOUSES
74m²



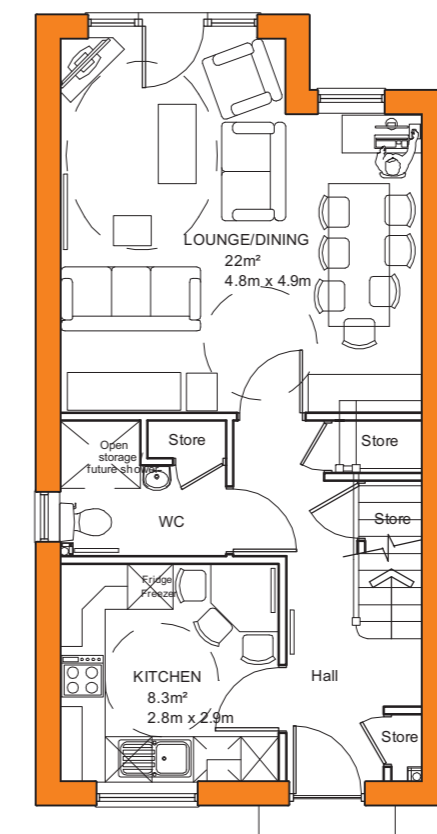
FIRST FLOOR PLAN



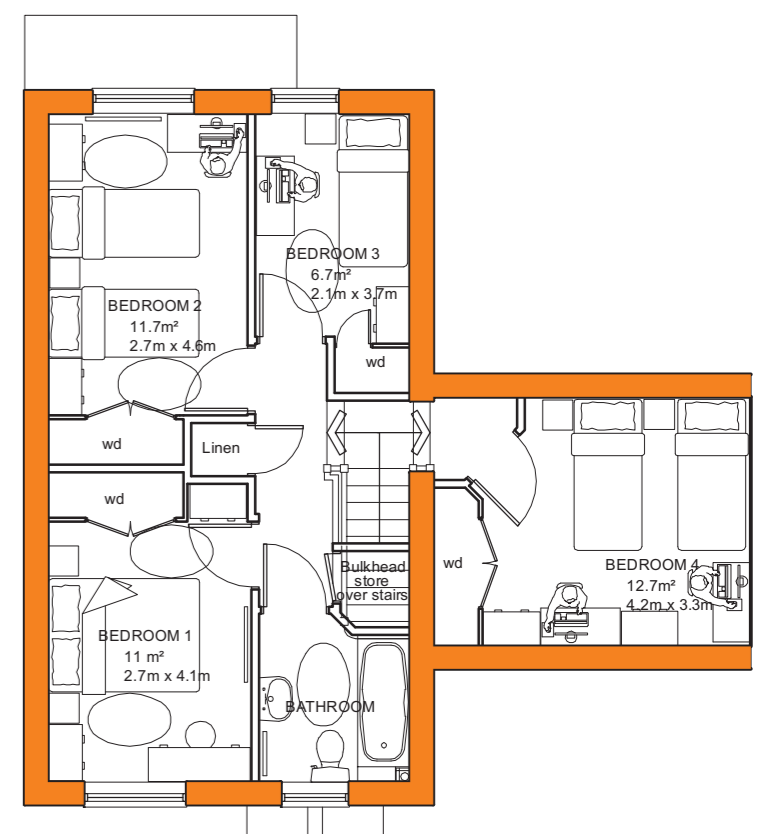
GROUND FLOOR PLAN
3 BEDROOM 5 PERSON HOUSES
85m²



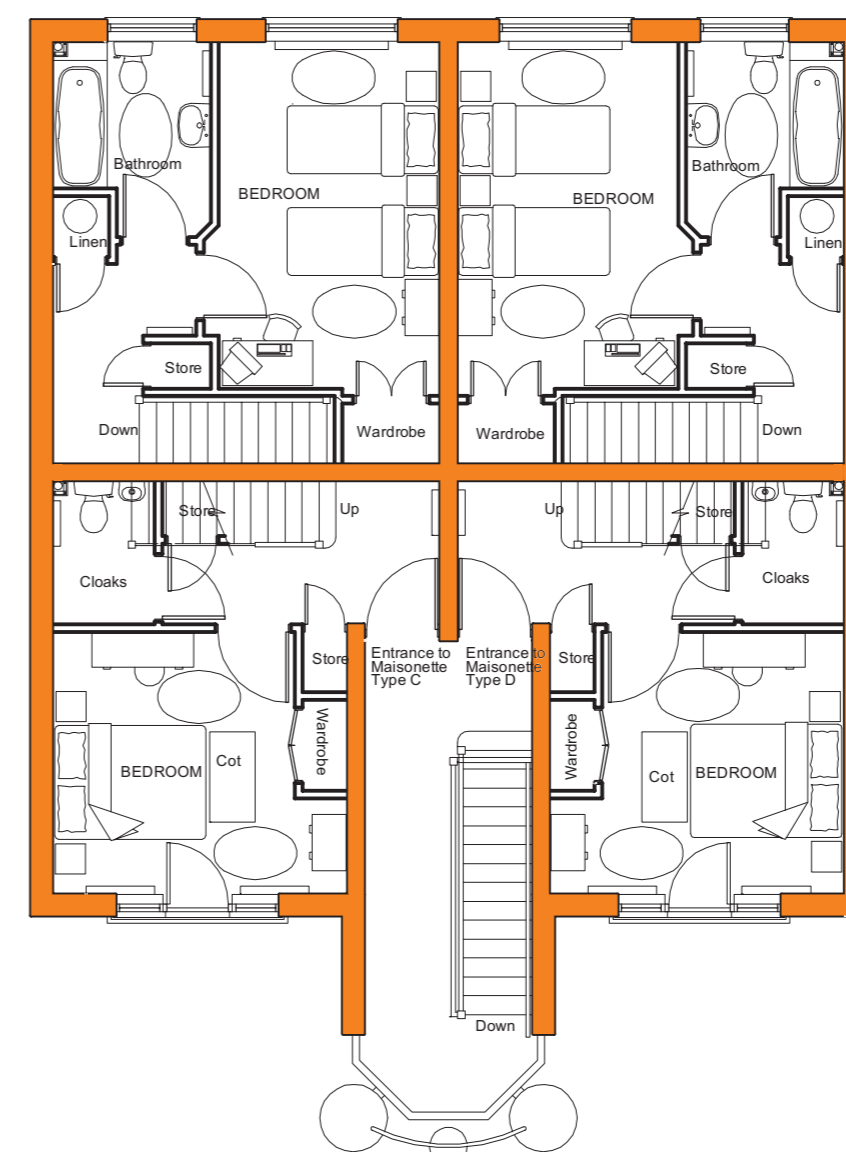
FIRST FLOOR PLAN



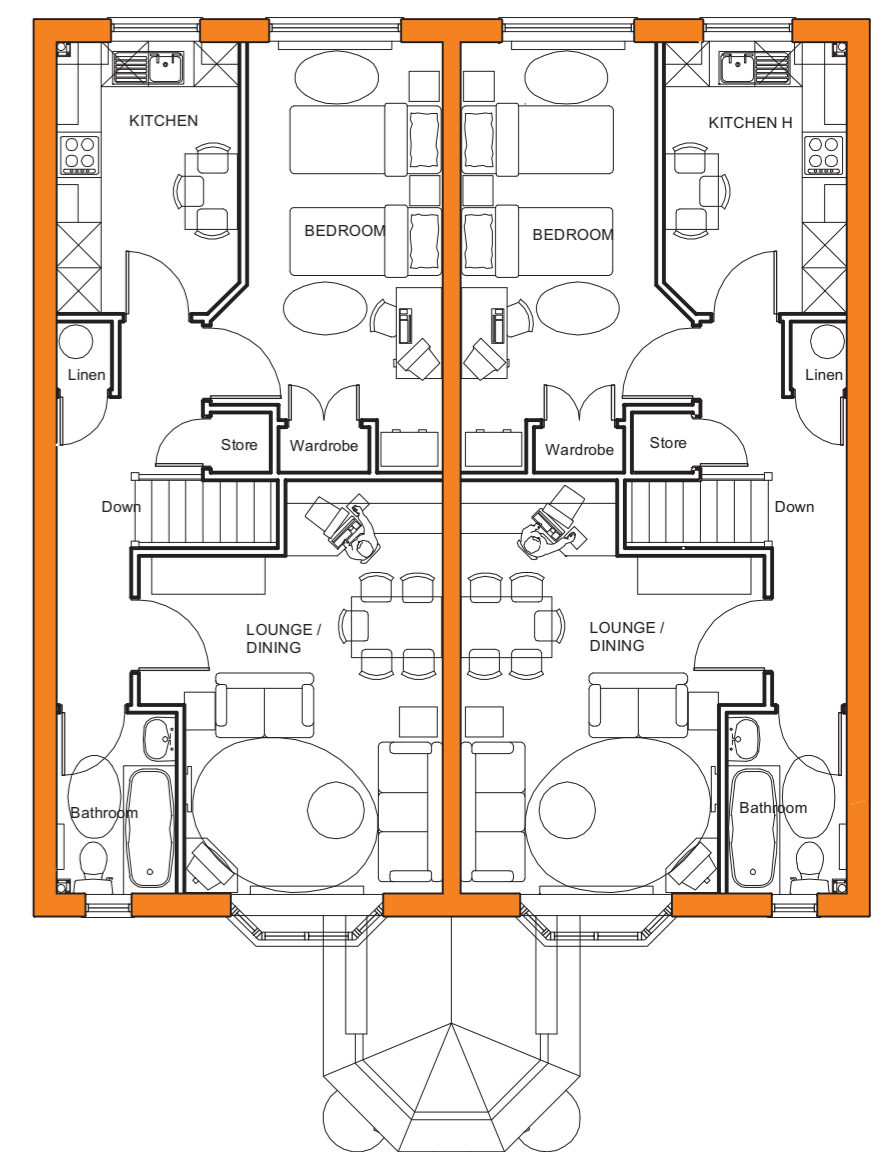
GROUND FLOOR PLAN
4 BEDROOM 7 PERSON HOUSES
101m²



FIRST FLOOR PLAN



First floor



Second floor

The current proposed mix is:
 98 1bed/2person flats
 130 2bed/3person flats
 130 2bed/4person flats
 148 2bed/3person maisonettes
 135 2bed/4person houses
 50 3bed/5person houses
 9 4bed/7person houses